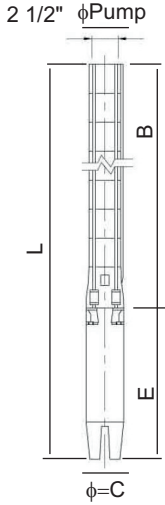


50 Hz seçim aralığı: Q= 7 m <sup>3</sup> /sa - 18 m <sup>3</sup> /sa	
Standart Klepe Çıkışı : 2 1/2" İçten Pasolu 11 Diş ( NPT : Özel istek )	
Fan tipi: Radyal	
Dönüş : Saat Yönü Ters	
Bağlantı : NEMA Standardına uygun	
Mil Çapı : 19 mm Altıköşe	
Minimum sıvı seviyesi: Emiş süzgecinin altından itibaren 800 mm.	
Maksimum pompa dış çapı (Kablo muhafazası ile birlikte): 133 mm	
Pompalanan Sıvı: Kimyasal ve mekanik aşındırıcı olmayan akışkan.	
İzin verilen maksimum kum miktarı = 50 g/m <sup>3</sup>	
İzin verilen katı parçacık ölçüsü: Max 2mm	
İmalat ve güvenlik standartları:	Tarih
TS 11146:1993	TS EN 809:2000 98/37/EC
TS EN ISO 12100-1:2007	TS EN ISO 12100-2:2006
	REV. 0

Operating range at 50 Hz: Q= 7m <sup>3</sup> /h - 18 m <sup>3</sup> /h	
Standard Outlet : 2 1/2" Inside Threaded 11 TPI ( NPT : Optional )	
Impeller type: Radial	
Rotation : CCW	
Connection : According to NEMA Standard	
Shaft Diameter : 19 mm Hexagon	
Minimum liquid level (NPSH) : 800 mm from bottom of suction grid	
Maximum pump (Wet end) diameter - (Including cable guard): 133 mm	
Liquid being pumped: Chemically and mechanically non aggressive.	
Maximum allowable solid quantity = 50 g/m <sup>3</sup>	
Solid dimension: Max 2mm	
Construction and safety standards:	Date
TS 11146:1993	TS EN 809:2000 98/37/EC
TS EN ISO 12100-1:2007	TS EN ISO 12100-2:2006
	REV. 0

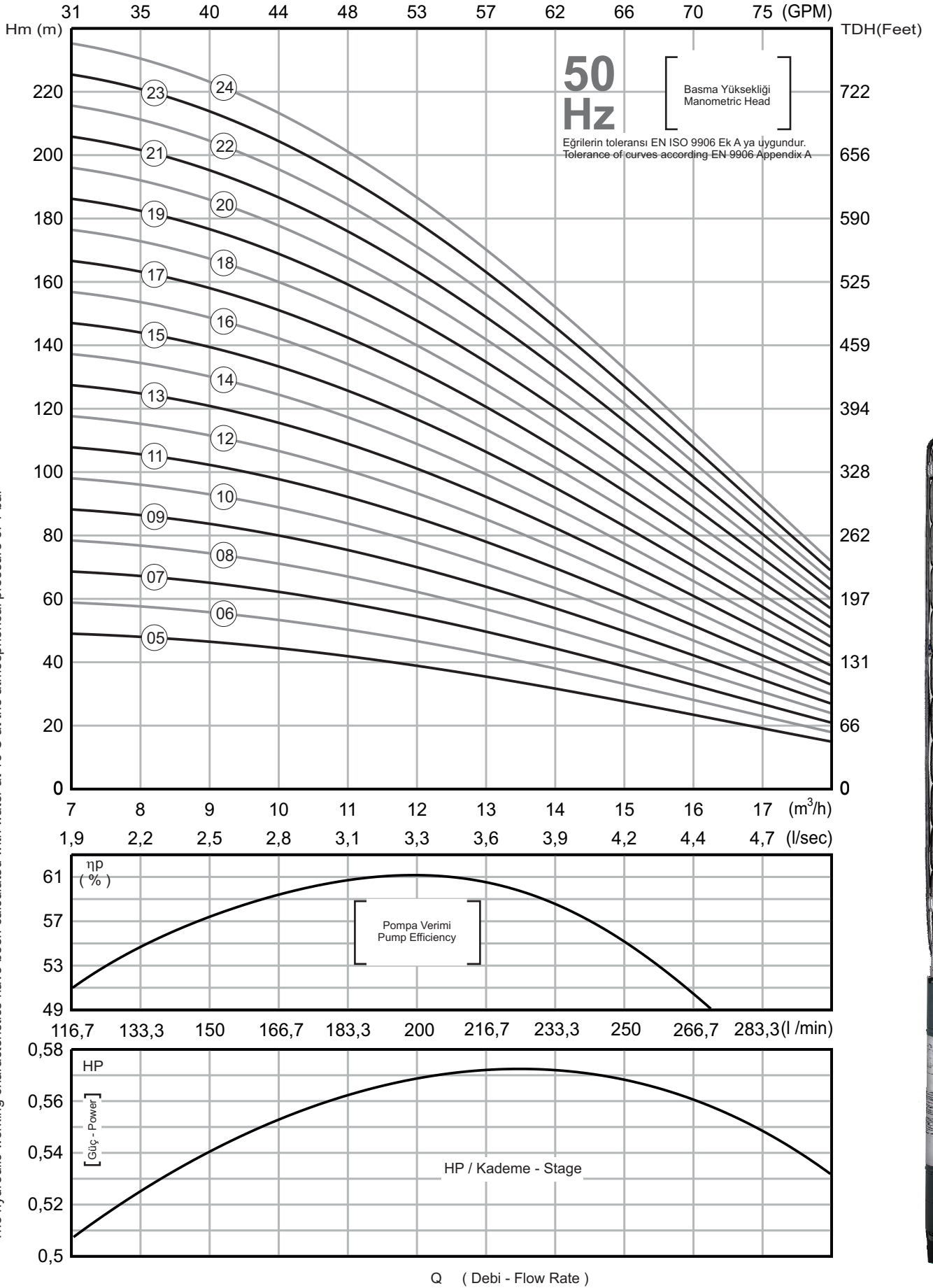


POMPA TİPİ PUMP TYPE	MOTOR MOTEUR			ÖLÇÜLER / DIMENSIONS ( mm )										AĞIRLIK / WEIGHT ( kg )					
	4" HP	6" HP	kW	6"-4"		6"-6"		4"		6"		PUMP		MOTOR		POMPA PUMP		TOPLAM TOTAL	
				L	L	E	E	B	B	ø = C	ø = C	ø	D	4"	6"	6"-4"	6"-6"	6"-4"	6"-6"
SS 612/05	4	-	3	1079	-	581	-	498	-	93	-	133	2 1/2"	19	-	12	-	31	-
SS 612/06	4	-	3	1109	-	581	-	528	-	93	-	133	2 1/2"	19	-	12	-	31	-
SS 612/07	5,5	5,5	4	1179	1188	621	630	558	558	93	145	133	2 1/2"	21	46	13	13	34	59
SS 612/08	5,5	5,5	4	1210	1219	621	630	589	589	93	145	133	2 1/2"	21	46	14	14	35	60
SS 612/09	5,5	5,5	4	1240	1249	621	630	619	619	93	145	133	2 1/2"	21	46	14	15	35	61
SS 612/10	7,5	7,5	5,5	1389	1279	740	630	649	649	93	145	133	2 1/2"	25	46	15	16	40	62
SS 612/11	7,5	7,5	5,5	1419	1309	740	630	679	679	93	145	133	2 1/2"	25	46	16	17	41	63
SS 612/12	7,5	7,5	5,5	1449	1339	740	630	709	709	93	145	133	2 1/2"	25	46	17	17	42	63
SS 612/13	7,5	7,5	5,5	1480	1370	740	630	740	740	93	145	133	2 1/2"	25	46	17	18	42	64
SS 612/14	10	10	7,5	1630	1420	860	650	770	770	93	145	133	2 1/2"	31	48	18	19	49	67
SS 612/15	10	10	7,5	1660	1450	860	650	800	800	93	145	133	2 1/2"	31	48	19	20	50	68
SS 612/16	10	10	7,5	1690	1480	860	650	830	830	93	145	133	2 1/2"	31	48	20	21	51	69
SS 612/17	10	10	7,5	1720	1510	860	650	860	860	93	145	133	2 1/2"	31	48	21	22	52	70
SS 612/18	-	12,5	9,2	-	1581	-	690	-	891	-	145	133	2 1/2"	-	50	-	23	-	73
SS 612/19	-	12,5	9,2	-	1611	-	690	-	921	-	145	133	2 1/2"	-	50	-	23	-	73
SS 612/20	-	12,5	9,2	-	1641	-	690	-	951	-	145	133	2 1/2"	-	50	-	24	-	74
SS 612/21	-	12,5	9,2	-	1671	-	690	-	981	-	145	133	2 1/2"	-	50	-	25	-	75
SS 612/22	-	12,5	9,2	-	1701	-	690	-	1011	-	145	133	2 1/2"	-	50	-	26	-	76
SS 612/23	-	15	11	-	1772	-	730	-	1042	-	145	133	2 1/2"	-	56	-	27	-	83
SS 612/24	-	15	11	-	1802	-	730	-	1072	-	145	133	2 1/2"	-	56	-	28	-	84

POMPA TİPİ PUMP TYPE	MOTOR MOTEUR			Başma Yüksekliği (Hm) Total Dynamic Head (TDH)														
	4" HP	6" HP	kW	m <sup>3</sup> /h	0	7	8	9	10	11	12	13	14	15	16	17	18	
				l / sec	0,00	1,94	2,22	2,50	2,78	3,06	3,33	3,61	3,89	4,17	4,44	4,72	5,00	
SS 612/05	4	-	3	gpm	0	31	35	40	44	48	53	57	62	66	70	75	79	
SS 612/06	4	-	3	55	49	48	47	45	42	39	36	32	28	24	19	15		
SS 612/07	5,5	5,5	4	65	59	58	56	53	50	46	43	38	33	28	23	18		
SS 612/08	5,5	5,5	4	76	69	67	65	62	59	54	50	45	39	33	27	21		
SS 612/09	5,5	5,5	4	87	78	77	74	71	67	62	57	51	44	38	30	24		
SS 612/10	7,5	7,5	5,5	98	88	86	84	80	76	69	64	58	50	42	34	27		
SS 612/11	7,5	7,5	5,5	109	98	96	93	89	84	77	71	64	55	47	38	30		
SS 612/12	7,5	7,5	5,5	120	108	106	102	98	92	85	78	70	61	52	42	33		
SS 612/13	7,5	7,5	5,5	131	118	115	112	107	101	92	85	77	66	56	46	36		
SS 612/14	10	10	7,5	142	127	125	121	116	109	100	92	83	72	61	49	39		
SS 612/15	10	10	7,5	153	137	134	130	125	118	108	99	90	77	66	53	42		
SS 612/16	10	10	7,5	164	147	144	140	134	126	116	107	96	83	71	57	45		
SS 612/17	10	10,0	7,5	174	157	154	149	142	134	123	114	102	88	75	61	48		
SS 612/18	-	12,5	9,2	185	167	163	158	151	143	131	121	109	94	80	65	51		
SS 612/19	-	12,5	9,2	196	176	173	167	160	151	139	128	115	99	85	68	54		
SS 612/20	-	12,5	9,2	207	186	182	177	169	160	146	135	122	105	89	72	57		
SS 612/21	-	13	9	218	196	192	186	178	168	154	142	128	110	94	76	60		
SS 612/22	-	13	9	229	206	202	195	187	176	162	149	134	116	99	80	63		
SS 612/23	-	15	11	240	216	211	205	196	185	169	156	141	121	103	84	66		
SS 612/24	-	15	11	251	225	221	214	205	193	177	163	147	127	108	87	69		
SS 612/24	-	15	11	262	235	230	223	214	202	185	170	154	132	113	91	72		

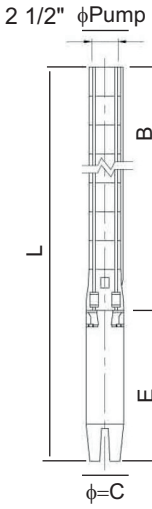
İMPO ürünleri üzerinde değişiklik yapma hakkına sahiptir.  
İMPO reserves the right to modify products without a prior notice

Hidrolik çalışma karakteristikleri 15°C deki suyla ve 1 bar atmosferik basınç altında alınmıştır  
The hydraulic working characteristics have been calculated with water at 15°C at the atmospheric pressure of 1 bar



50 Hz seçim aralığı: Q= 7 m <sup>3</sup> /sa - 18 m <sup>3</sup> /sa	
Standart Klepe Çıkışı: 2 1/2" İçten Pasolu 11 Diş ( NPT : Özel istek )	
Fan tipi: Radyal	
Dönüş : Saat Yönü Tersi	
Bağlantı : NEMA Standardına uygun	
Mil Çapı : 19 mm Altıköşe	
Minimum sıvı seviyesi: Emiş süzgecinin altından itibaren 800 mm.	
Maksimum pompa dış çapı (Kablo muhafazası ile birlikte): 133 mm	
Pompanılan Sıvı: Kimyasal ve mekanik aşındırıcı olmayan akışkan.	
İzin verilen maksimum kum miktarı = 50 g/m <sup>3</sup>	
İzin verilen katı parçacık ölçüsü: Max 2mm	
İmalat ve güvenlik standartları:	Tarih
TS 11146:1993	TS EN 809:2000 98/37/EC
TS EN ISO 12100-1:2007	TS EN ISO 12100-2:2006
	REV: 0

Operating range at 50 Hz: Q= 7m <sup>3</sup> /h - 18 m <sup>3</sup> /h	
Standard Outlet : 2 1/2" Inside Threaded 11 TPI ( NPT : Optional )	
Impeller type: Radial	
Rotation : CCW	
Connection : According to NEMA Standard	
Shaft Diameter : 19 mm Hexagon	
Minimum liquid level (NPSH) : 800 mm from bottom of suction grid	
Maximum pump (Wet end) diameter - (Including cable guard): 133 mm	
Liquid being pumped: Chemically and mechanically non aggressive.	
Maximum allowable solid quantity = 50 g/m <sup>3</sup>	
Solid dimension: Max 2mm	
Construction and safety standards:	Date
TS 11146:1993	TS EN 809:2000 98/37/EC
TS EN ISO 12100-1:2007	TS EN ISO 12100-2:2006
	REV: 0



POMPA TİPİ PUMP TYPE	MOTOR MOTEUR			ÖLÇÜLER / DIMENSIONS ( mm )								AĞIRLIK / WEIGHT ( kg )							
	4" HP	6" HP	kW	6"-4"	6"-6"	4"	6"	6"-4"	6"-6"	4"	6"	ø PUMP	ø D	MOTOR		POMPA PUMP		TOPLAM TOTAL	
				L	L	E	E	B	B	ø = C	ø = C			4"	6"	6"-4"	6"-6"	6"-4"	6"-6"
SS 612/25	-	15	11	-	1832	-	730	-	1102	-	145	133	2 1/2"	-	56	-	29	-	85
SS 612/26	-	15	11	-	1862	-	730	-	1132	-	145	133	2 1/2"	-	56	-	29	-	85
SS 612/27	-	17,5	13	-	1942	-	780	-	1162	-	145	133	2 1/2"	-	60	-	30	-	90
SS 612/28	-	17,5	13	-	1973	-	780	-	1193	-	145	133	2 1/2"	-	60	-	31	-	91
SS 612/29	-	17,5	13	-	2003	-	780	-	1223	-	145	133	2 1/2"	-	60	-	32	-	92
SS 612/30	-	17,5	13	-	2033	-	780	-	1253	-	145	133	2 1/2"	-	60	-	33	-	93
SS 612/31	-	20	15	-	2113	-	830	-	1283	-	145	133	2 1/2"	-	66	-	34	-	100
SS 612/32	-	20	15	-	2143	-	830	-	1313	-	145	133	2 1/2"	-	66	-	35	-	101
SS 612/33	-	20	15	-	2174	-	830	-	1344	-	145	133	2 1/2"	-	66	-	35	-	101
SS 612/34	-	20	15	-	2204	-	830	-	1374	-	145	133	2 1/2"	-	66	-	36	-	102
SS 612/35	-	20	15	-	2234	-	830	-	1404	-	145	133	2 1/2"	-	66	-	37	-	103
SS 612/36	-	20	15	-	2264	-	830	-	1434	-	145	133	2 1/2"	-	66	-	38	-	104
SS 612/37	-	25	18,5	-	2344	-	880	-	1464	-	145	133	2 1/2"	-	72	-	39	-	111
SS 612/38	-	25	18,5	-	2375	-	880	-	1495	-	145	133	2 1/2"	-	72	-	40	-	112
SS 612/39	-	25	18,5	-	2405	-	880	-	1525	-	145	133	2 1/2"	-	72	-	41	-	113
SS 612/40	-	25	18,5	-	2435	-	880	-	1555	-	145	133	2 1/2"	-	72	-	41	-	113

POMPA TİPİ PUMP TYPE	MOTOR MOTEUR			m <sup>3</sup> /h	0	7	8	9	10	11	12	13	14	15	16	17	18	
	4" HP	6" HP	kW		I / sn	0,00	1,94	2,22	2,50	2,78	3,06	3,33	3,61	3,89	4,17	4,44	4,72	5,00
					Gal / mn	0	31	35	40	44	48	53	57	62	66	70	75	79
SS 612/25	-	15	11	Basma Yüksekliği (Hm) Total Dynamic Head (TDH)	273	245	240	233	223	210	193	178	160	138	118	95	75	
SS 612/26	-	15	11		283	255	250	242	231	218	200	185	166	143	122	99	78	
SS 612/27	-	17,5	13		294	265	259	251	240	227	208	192	173	149	127	103	81	
SS 612/28	-	17,5	13		305	274	269	260	249	235	216	199	179	154	132	106	84	
SS 612/29	-	17,5	13		316	284	278	270	258	244	223	206	186	160	136	110	87	
SS 612/30	-	17,5	13		327	294	288	279	267	252	231	213	192	165	141	114	90	
SS 612/31	-	20	15		338	304	298	288	276	260	239	220	198	171	146	118	93	
SS 612/32	-	20	15		349	314	307	298	285	269	246	227	205	176	150	122	96	
SS 612/33	-	20	15,0		360	323	317	307	294	277	254	234	211	182	155	125	99	
SS 612/34	-	20	15,0		371	333	326	316	303	286	262	241	218	187	160	129	102	
SS 612/35	-	20	15,0		382	343	336	326	312	294	270	249	224	193	165	133	105	
SS 612/36	-	20	15,0		392	353	346	335	320	302	277	256	230	198	169	137	108	
SS 612/37	-	25	18,5		403	363	355	344	329	311	285	263	237	204	174	141	111	
SS 612/38	-	25	18,5		414	372	365	353	338	319	293	270	243	209	179	144	114	
SS 612/39	-	25	18,5		425	382	374	363	347	328	300	277	250	215	183	148	117	
SS 612/40	-	25	18,5		436	392	384	372	356	336	308	284	256	220	188	152	120	

Katalogtaki hidrolik karakteristikler çekvalf kayıplarını içermez. Hydraulic characteristics of catalog don't include the loss of check-valve

Hidrolik çalışma karakteristikleri 15°C deki suyla ve 1 bar atmosferik basınç altında alınmıştır  
The hydraulic working characteristics have been calculated with water at 15°C at the atmospheric pressure of 1 bar

